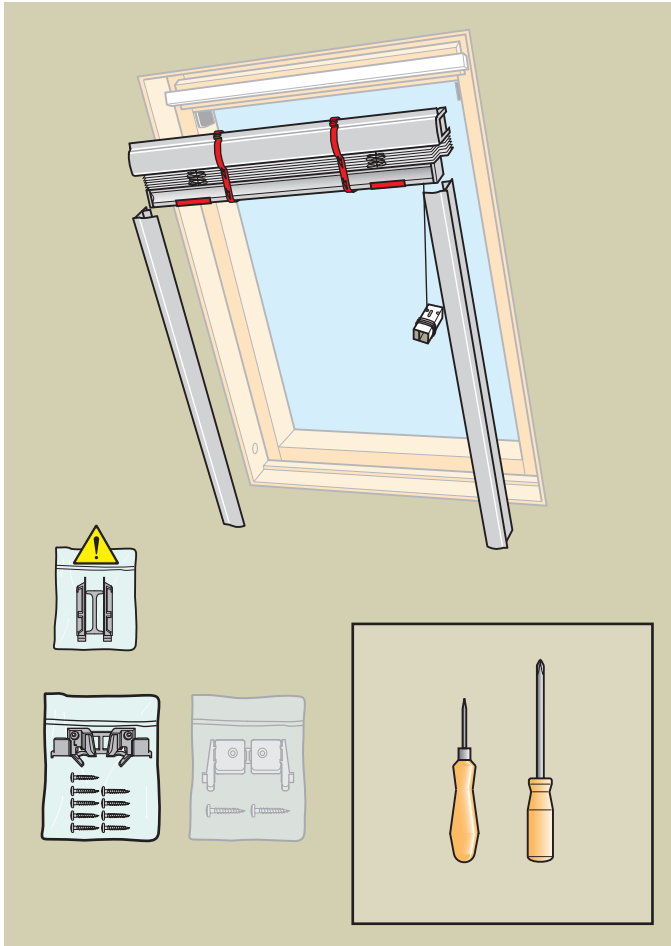


PAL

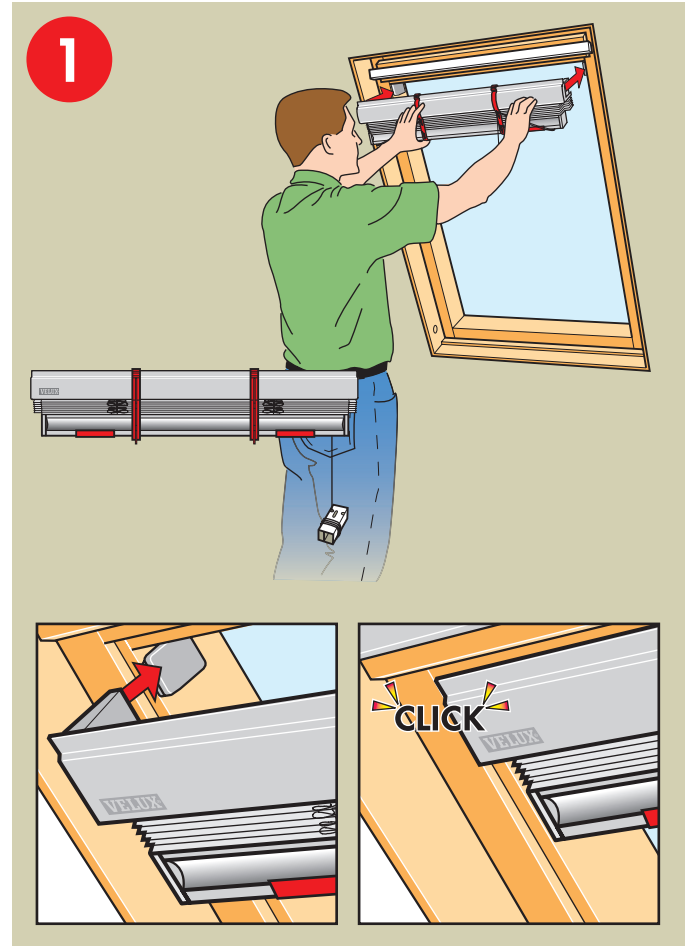
VELUX®



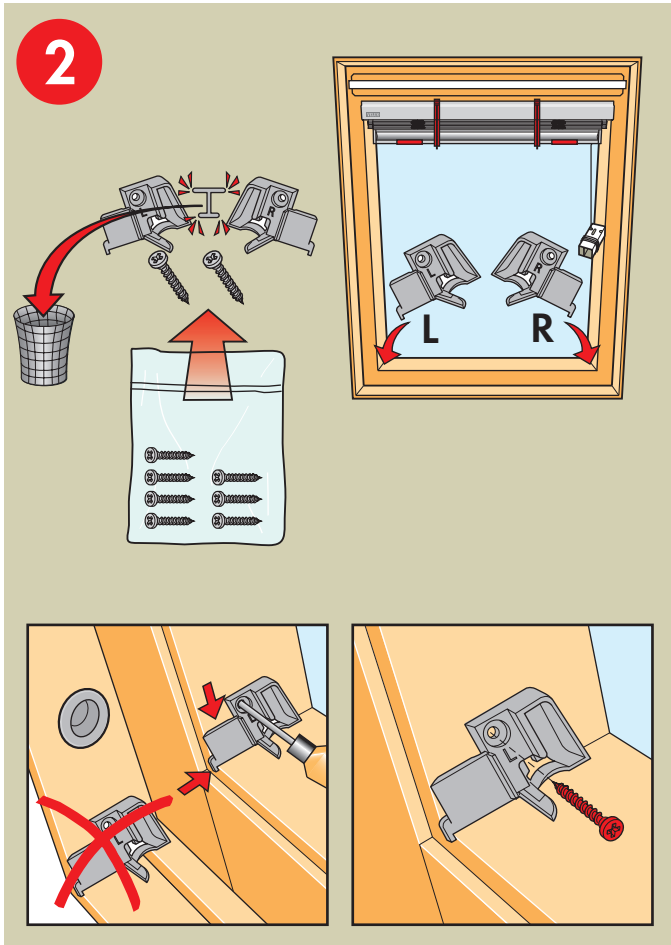
VAS 451235-1106



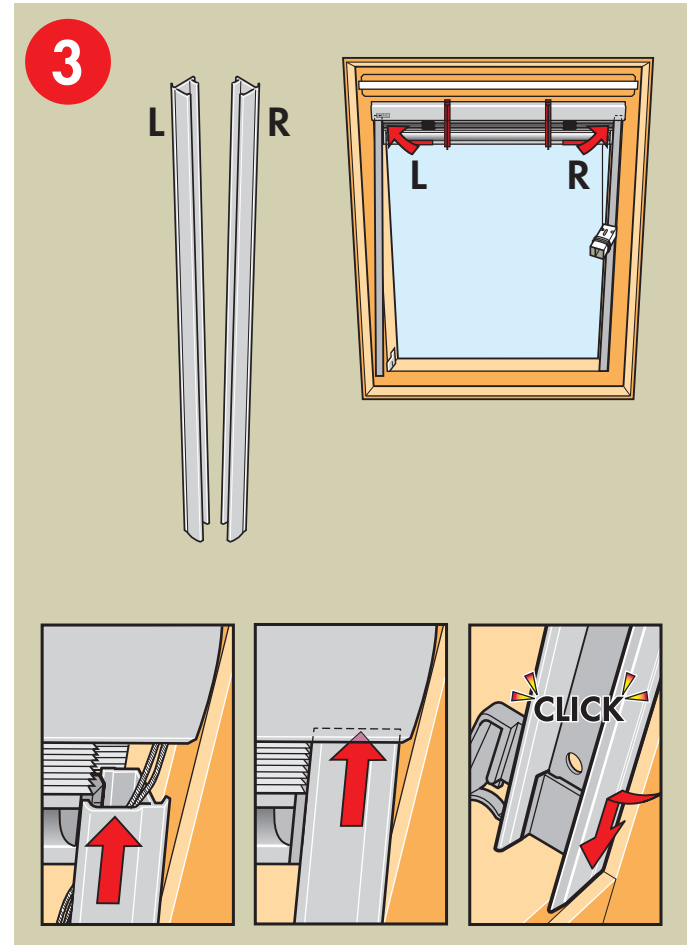
2



3

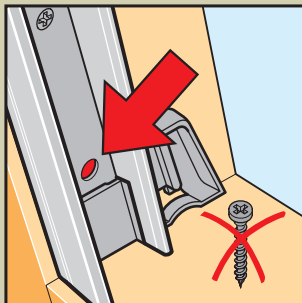
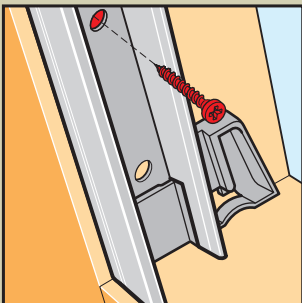
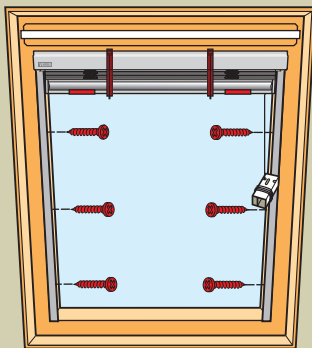
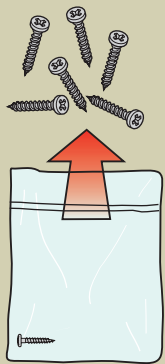


4



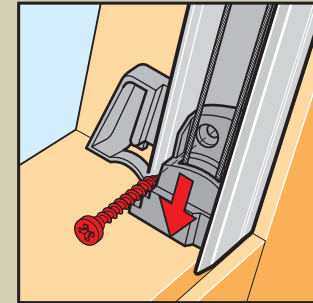
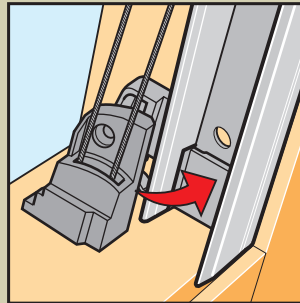
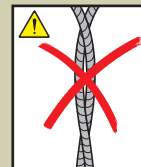
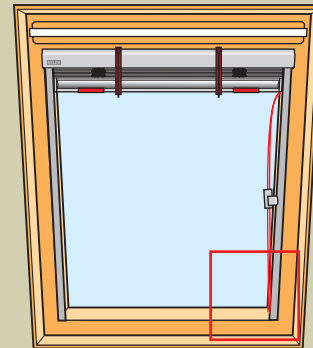
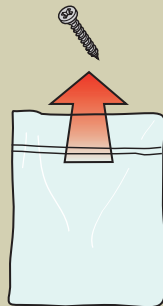
5

4



6

5



7

VELUX®

A: VELUX Österreich GmbH
02245/32 3 50

AUS: VELUX Australia Pty. Ltd.
(02) 9550 3288

B: VELUX Belgium
(010) 42.09.09

BG: VELUX Bulgaria EOOD
02/955 95 26

BiH: VELUX Bosna i Hercegovina d.o.o.
033/626 493, 626 494

BY: VELUX Roof Windows FE
(017) 217 7385

CDN: VELUX Canada Inc.
1 800 88-VELUX (888-3589)

CH: VELUX Schweiz AG
0848 945 549

CHN: VELUX (CHINA) CO. LTD.
0316-607 27 27

CZ: VELUX Česká republika, s.r.o.
531 015 511

D: VELUX Deutschland GmbH
0180-333 33 99

DK: VELUX Danmark A/S
45 16 45 16

E: VELUX Spain, S.A.
91 509 71 00

EST: VELUX Eesti OÜ
621 7790

F: VELUX France
0821 02 15 15
0,119€ TTC/min

FIN: VELUX Suomi Oy
09-887 0520

GB: VELUX Company Ltd.
0870 380 9593

H: VELUX Magyarország Kft.
(06/1) 436-0601

HR: VELUX Hrvatska d.o.o.
01/5555 444

I: VELUX Italia s.p.a.
045/6173666

IRL: VELUX Company Ltd.
1800 409 750

J: VELUX-Japan Ltd.
03(3478)81 41

LT: VELUX Lietuva, UAB
(85) 270 91 01

LV: VELUX Latvia SIA
7 27 77 33

N: VELUX Norge AS
22 51 06 00

NL: VELUX Nederland B.V.
030 - 6 629 629

NZ: VELUX New Zealand Ltd.
09-6344 126

P: VELUX Portugal, Lda
21 880 00 60

PL: VELUX Polska Sp. z o.o.
(022) 33 77 000 / 33 77 070

RA: VELUX Argentina S.A.
0 114 711 5666

RCH: VELUX Chile Limitada
2-231 18 24

RO: VELUX România S.R.L.
0-8008-83589

RUS: VELUX Rossia ZAO
(095) 737 75 20

S: VELUX Svenska AB
042/144450

SK: VELUX Slovensko, s.r.o.
(02) 60 20 15 00

SLO: VELUX Slovenija d.o.o.
01 564 14 84

TR: VELUX Çatı Pencereleri
Ticaret Limited Şirketi
0 216 302 54 10

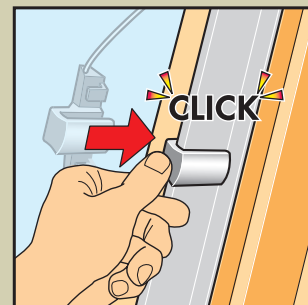
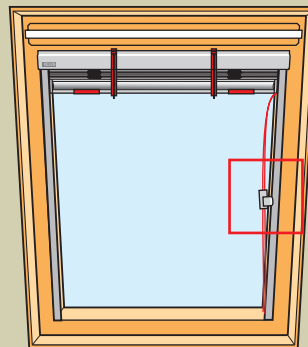
UA: VELUX Ukraina TOV
(044) 490 5703

USA: VELUX America Inc.
1-800-88-VELUX

YU: VELUX Jugoslavija d.o.o.
011 3670 468

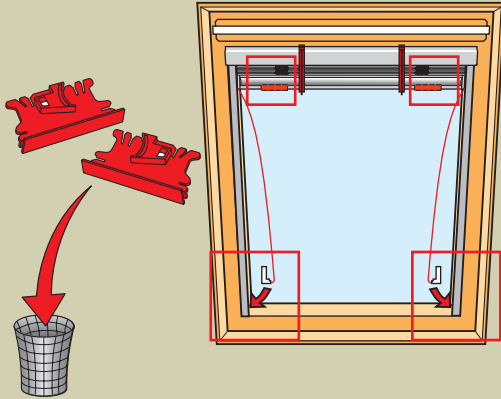
www.velux.com

6

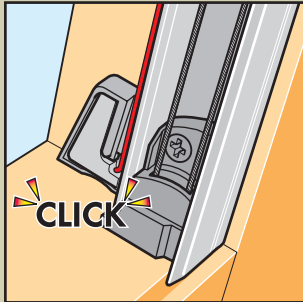
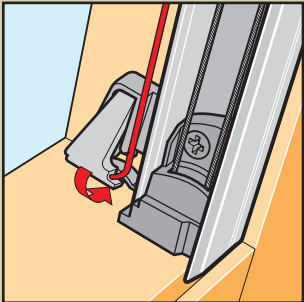
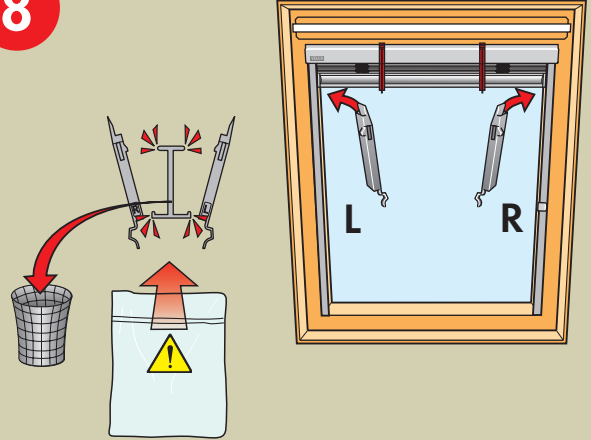


INSTALLATION INSTRUCTIONS FOR PAL ©2003-2006 VELUX GROUP
©VELUX AND THE VELUX LOGO ARE REGISTERED TRADEMARKS USED UNDER LICENSE BY THE VELUX GROUP

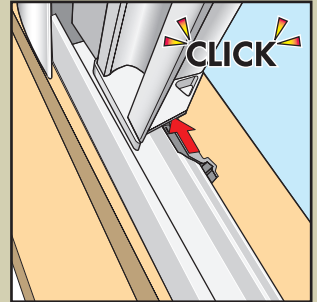
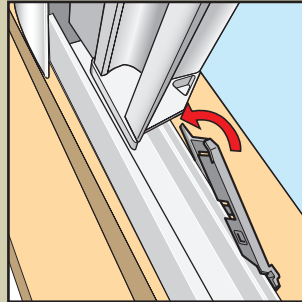
7



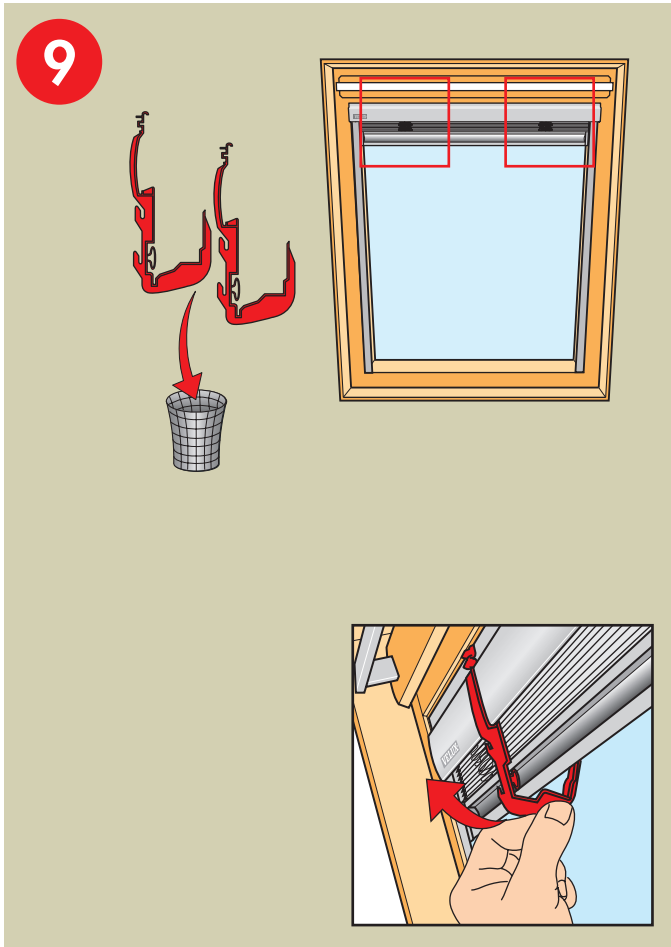
8



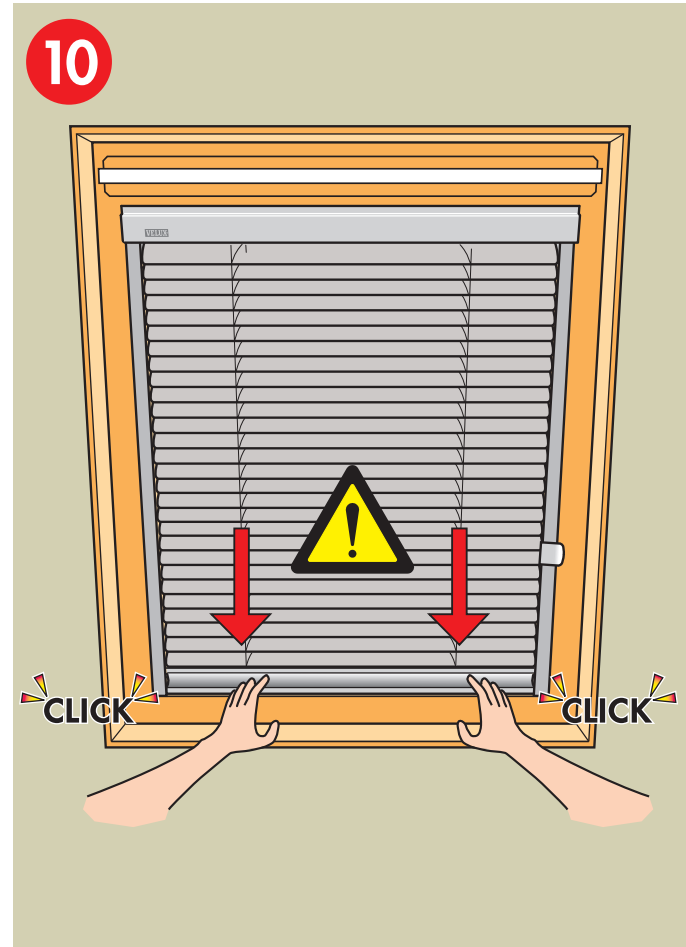
9



10

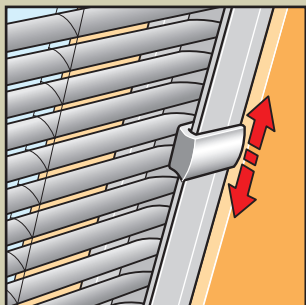
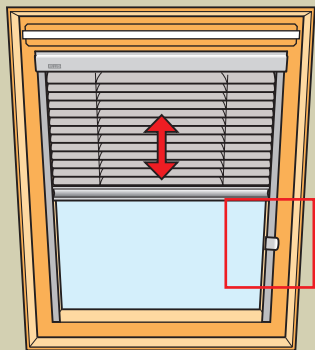


11



12

11



13



14